

M/S Enchanted Capri General Arrangement

SPECIFICATIONS

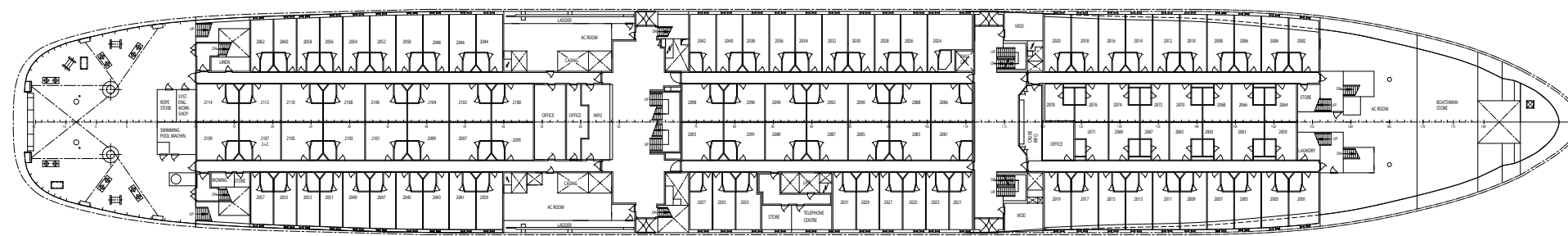
- Length Overall 157m
- Length Between Perps 134m
- Breadth Mld. 21.8m
- Depth To Upper Deck 16.3m
- Depth To 2nd Deck 13.7m
- Depth To 4th Deck (Bulkhead)
8.35m
- Speed (At 5.75m) 21 Kn
- Engine Output..... 18,000 Bhp

For more information on this or any ship of the ISP-managed fleet, please contact our offices in Miami or browse our website.

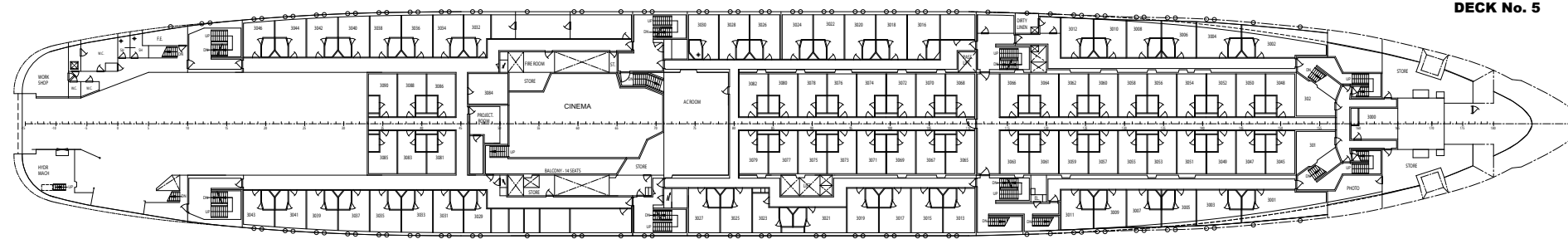
Main: +1 305 573 6355

4770 Biscayne Blvd, Penthouse A
Miami, Florida 33137 USA

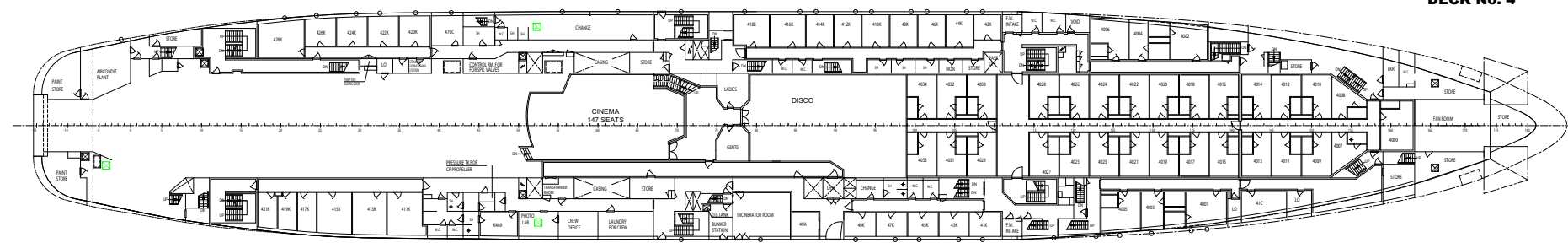
www.isp-usa.com



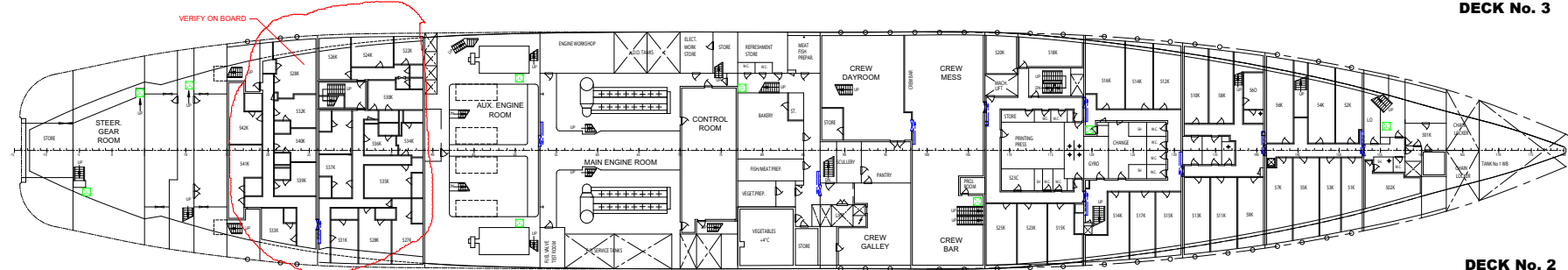
DECK No. 5



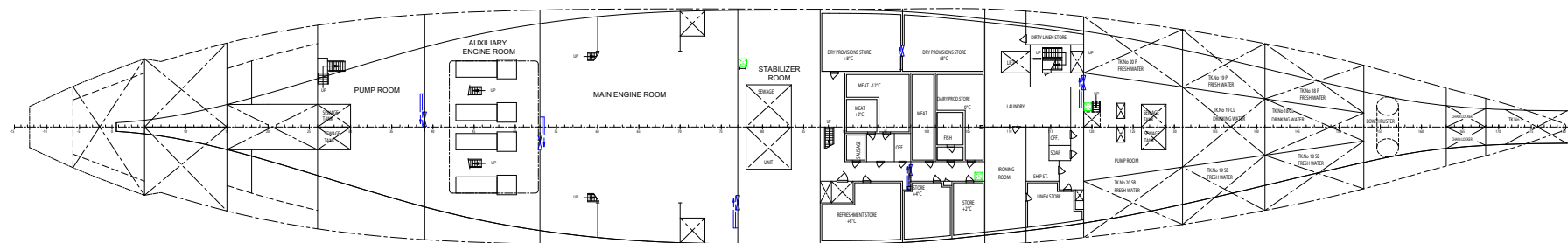
DECK No. 4



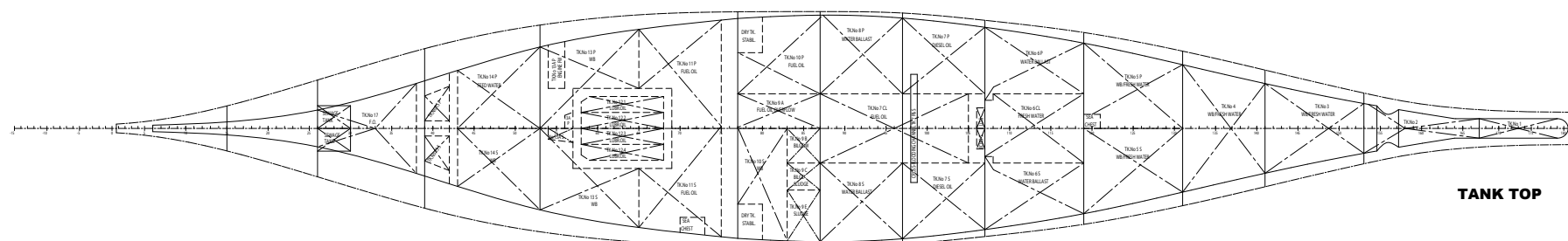
DECK No. 3



DECK No. 2



DECK No. 1



TANK TOP

M/S Enchanted Capri General Arrangement

SPECIFICATIONS

Length Overall 157m
 Length Between Perps 134m
 Breadth Mld. 21.8m
 Depth To Upper Deck 16.3m
 Depth To 2nd Deck 13.7m
 Depth To 4th Deck (Bulkhead)
 8.35m
 Speed (At 5.75m) 21 Kn
 Engine Output..... 18,000 Bhp

For more information on this or
 any ship of the ISP-managed fleet,
 please contact our offices in Miami
 or browse our website.

Main: +1 305 573 6355

4770 Biscayne Blvd, Penthouse A
 Miami, Florida 33137 USA

www.isp-usa.com