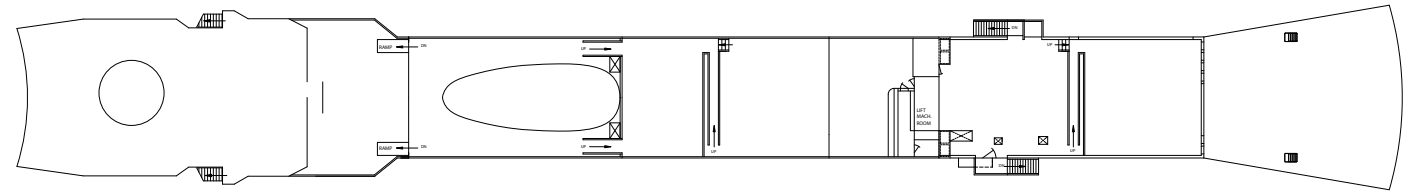
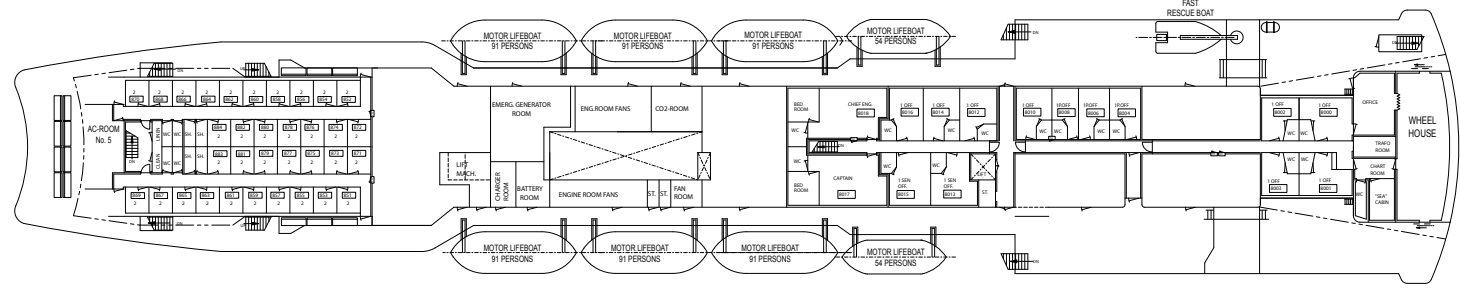


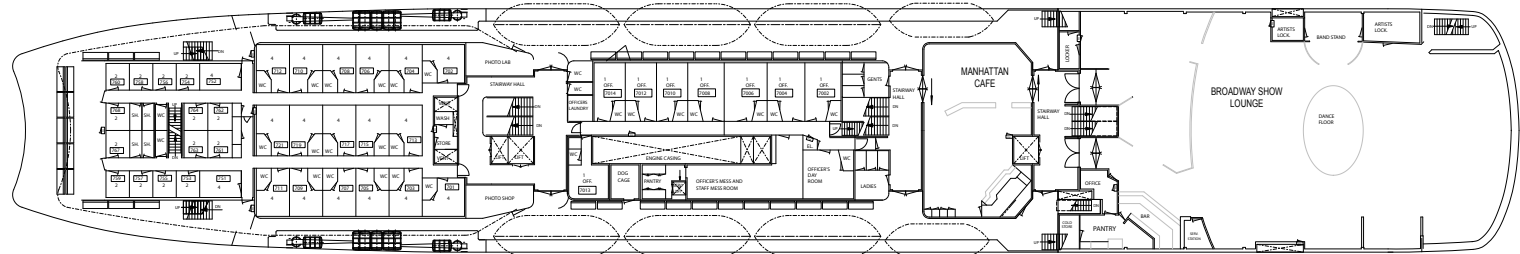
PROFILE



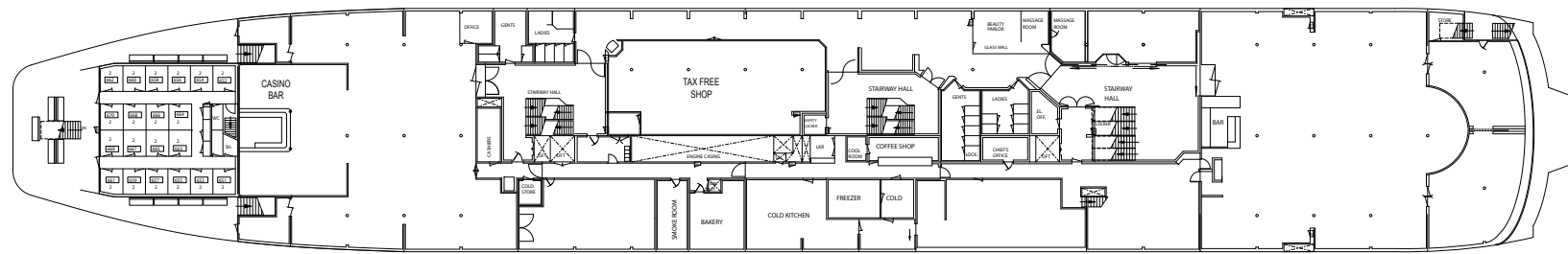
**COMPASS DECK
DECK No. 9**



**BRIDGE DECK
DECK No. 8**



**BOAT DECK
DECK No. 7**



**SALON DECK
DECK No. 6**

Scotia Prince General Arrangement

SPECIFICATIONS

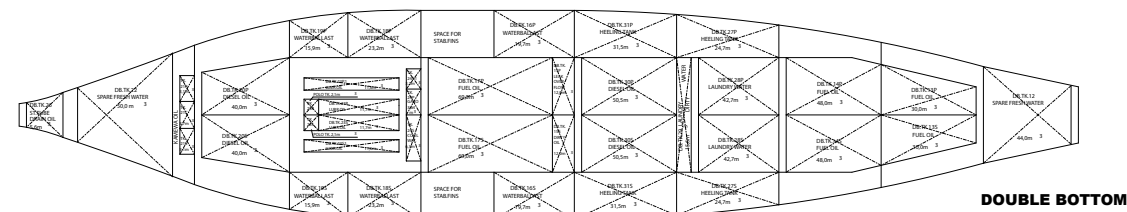
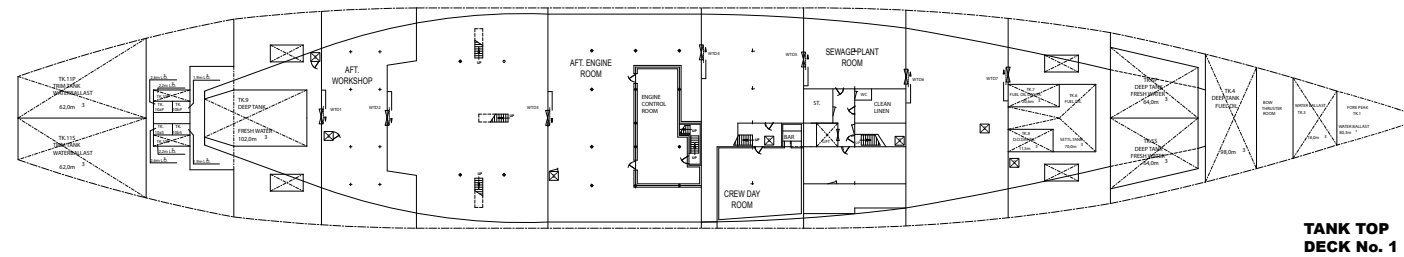
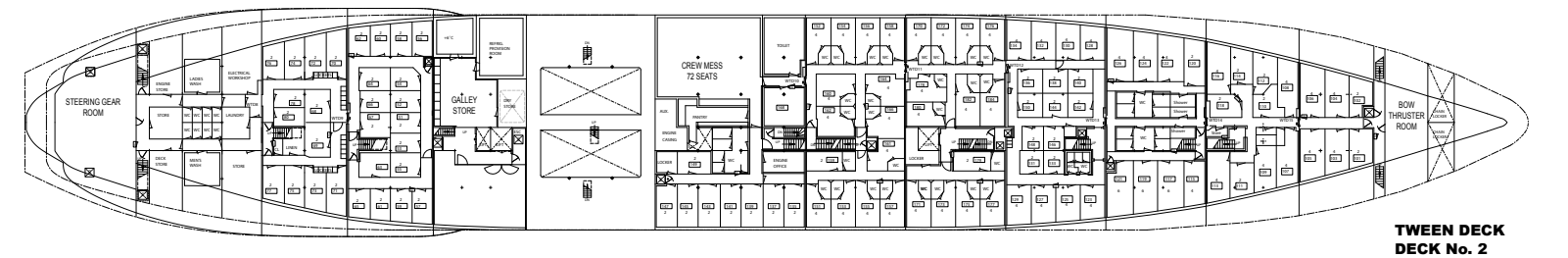
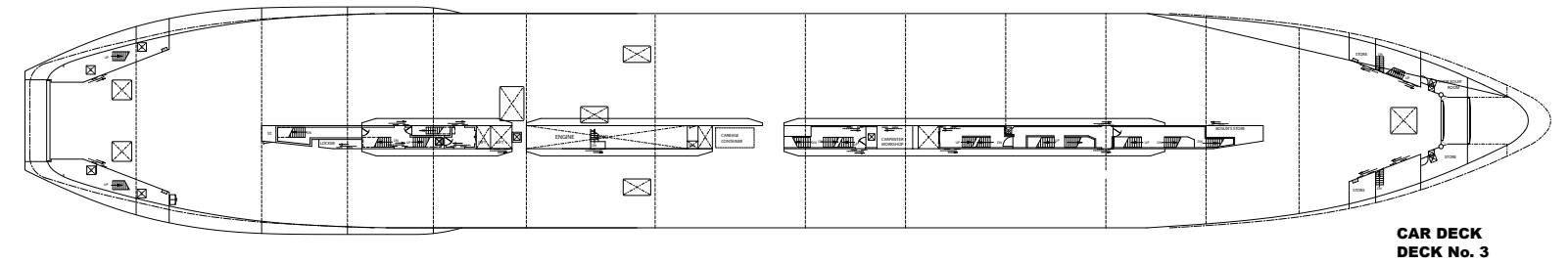
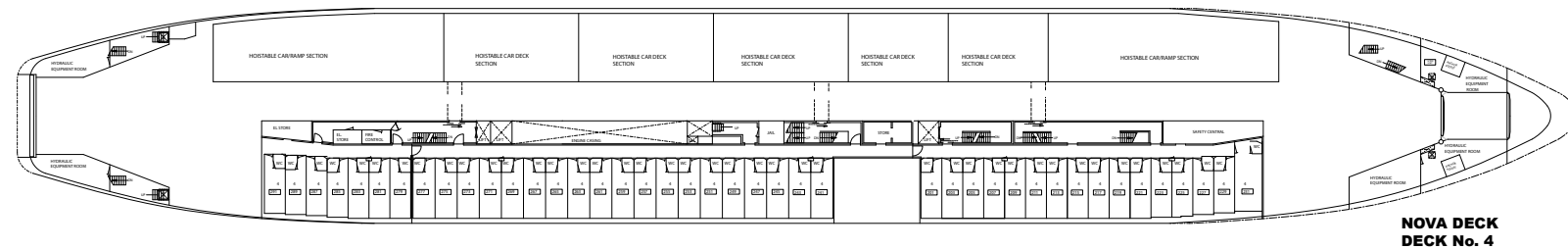
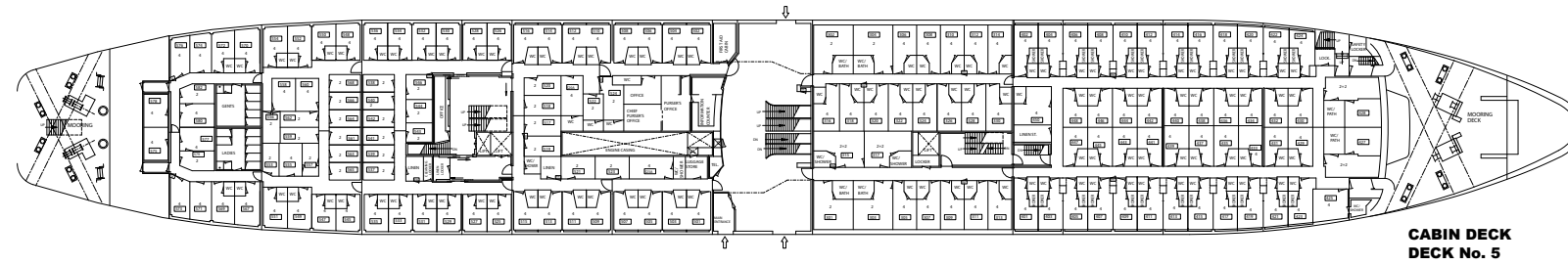
Length Overall..... 143 m
 Length Between Perps..... 127 m
 Breadth Mld. 19.5 m
 Depth To Main Deck 6.7 m
 Speed (At 5.75m) 21 Kn
 Engine Output 18,000 Bhp

For more information on this or any ship of the ISP-managed fleet, please contact our offices in Miami or browse our website.

Main: +1 305 573 6355

4770 Biscayne Blvd, Penthouse A
 Miami, Florida 33137 USA

www.isp-usa.com



Scotia Prince General Arrangement

SPECIFICATIONS

Length Overall..... 143 m
 Length Between Perps..... 127 m
 Breadth Mld. 19.5 m
 Depth To Main Deck 6.7 m
 Speed (At 5.75m) 21 Kn
 Engine Output 18,000 Bhp

For more information on this or any ship of the ISP-managed fleet, please contact our offices in Miami or browse our website.

Main: +1 305 573 6355

4770 Biscayne Blvd, Penthouse A
 Miami, Florida 33137 USA

www.isp-usa.com